



Thornbury Primary  
Leadership Academy



## Nurturing Today's Young People, Inspiring Tomorrow's Leaders

23.6.23

Dear parents/carers,

What a super busy and interactive week it has been! We had lots of trips and all our pupils were on their best behaviour, well done Thornbury! Preparation and a lot of hard work has been produced for Access All Arts Week. Make sure to follow us on Twitter [@ThornburyPLA](https://twitter.com/ThornburyPLA) to see all the amazing work produced.



An early Eid Mubarak to all our families that will be celebrating next week. **School will be closed on Wednesday 28th and Thursday 29th June for all pupils. School re-opens as normal on Friday 30th June. Please ensure your child returns on Friday 30th June as we are having Eid parties.**

## Late arrivals - SAFEGUARDING ISSUE



Please can we remind you all that if you are running late, you must escort your child into the main school building, even if they are a bit older! This is highly crucial for the sake of their safety and well-being. Unfortunately, our main entrance isn't monitored 24/7, this means that if your child happens to fall over, staff will not know, and neither will you. We won't be able to go help them unless we know! Please make sure you bring your child in through the main entrance and sign them in!

## Absence reporting

You must report your child's absence every single day. Please aim to ring the school office before 9am everyday stating your child's full name, class and the reason. If we don't receive your call or voicemail, we will ring both parents. We need to record why your child is absent. It is illegal to keep your child off school without a valid reason and you may risk a possible fine! Please also note, any arrivals after 9am will go down as an unauthorised, so **please make sure you arrive by 8.20am, the gates do close at 8.27am.**



## Car park



Our car park is very small, therefore it is strictly for disability badge holders only. We apologise for any inconvenience this may cause however we can only allow those that fit the criteria. If for any reasons, you are unable to park elsewhere and require urgent access, please speak to the main office who will be more than willing to negotiate.

## Polite reminder

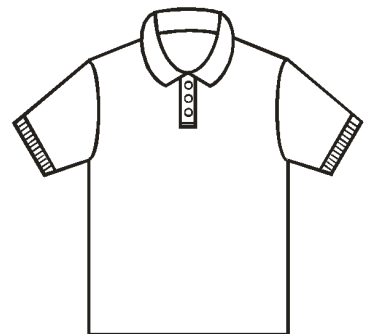
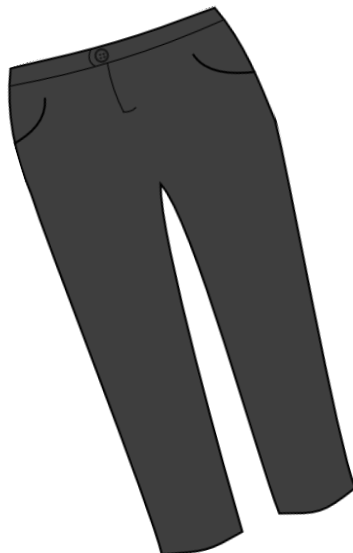
Please take the time to read emails/texts sent to you, we try to make sure that everything you are sent relates to your child, so nothing is irrelevant. If you would like further information on any emails we send, please contact the class teacher or the school office for assistance. We also encourage you to follow us on Twitter, we post reminders, useful information, live updates from school and other community events of interest. Don't miss out, or let your child miss out, please keep up to date with everything via Class Dojo and Twitter.

# Uniform selling event (Pop up shop)

We'll be approaching that time of the year again where parents may need to purchase school uniforms for the new academic year. **Our uniform pop-up shop will be held in the school hall on Tuesday 18<sup>th</sup> July 2023 from 2.30pm to 5.30pm.**

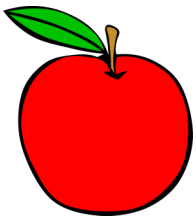
This will give you and your child the chance to try on or even purchase your child's school uniform for Sept 23. You will be able to have the full uniform fitting experience. The full range of branded school uniform and sports kit items will be available in all stocked sizes.

Portable changing rooms will be available and Stevensons staff will be on hand to take measurements and provide advice on sizing. Items can be purchased at the event and taken away on the day, or pupils can try on items to check sizes and then order online at a later date. Payments are to be made via card. We will be sending letters out with further information. Thank you.

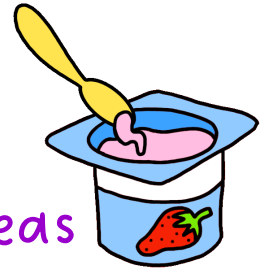


# Food for life

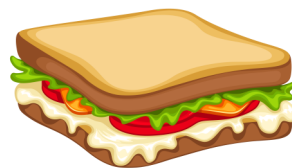
We have joined the food for life campaign which will support our school to improve health, wellbeing and motivation of our pupils. We are aiming for the bronze award, this is a fantastic opportunity to provide healthy school meals, great lunchtime and food education which will have a positive impact on our pupils. For further information, please visit: [Schools Award - Food for Life](#)



## Packed lunch - filling ideas



We have noticed a lot of packed lunches do not contain nutritious and filling meals. Please don't send your child in with only snacks. This is not a filling dinner. Your child requires the correct nutrients to help their growing bodies and mind. It will also help them stay focused in class and keep their bellies fuller for longer. Please access this link with further information on healthy packed lunches: [Lunchbox ideas and recipes – Healthier Families - NHS \(www.nhs.uk\)](#)



## Useful links:

[Healthier Families - Home - NHS \(www.nhs.uk\)](#)

[Eating a balanced diet - NHS \(www.nhs.uk\)](#)

[What to feed young children - NHS \(www.nhs.uk\)](#)

[8 tips for healthy eating - NHS \(www.nhs.uk\)](#)





Use healthy oils (like olive and canola oil) for cooking, on salad, and at the table. Limit butter. Avoid trans fat.

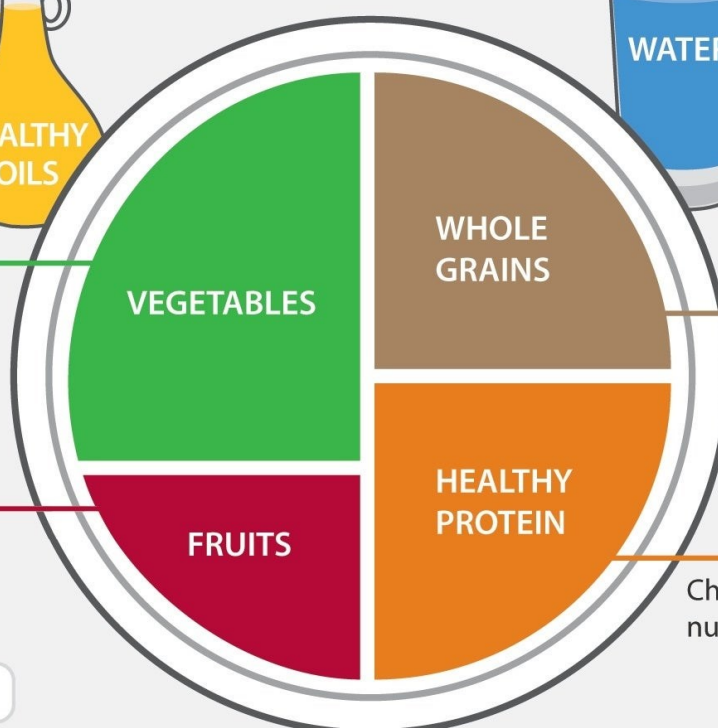


The more veggies – and the greater the variety – the better. Potatoes and French fries don't count.

Eat plenty of fruits of all colors.



© Harvard University



Drink water, tea, or coffee (with little or no sugar). Limit milk/dairy (1-2 servings/day) and juice (1 small glass/day). Avoid sugary drinks.

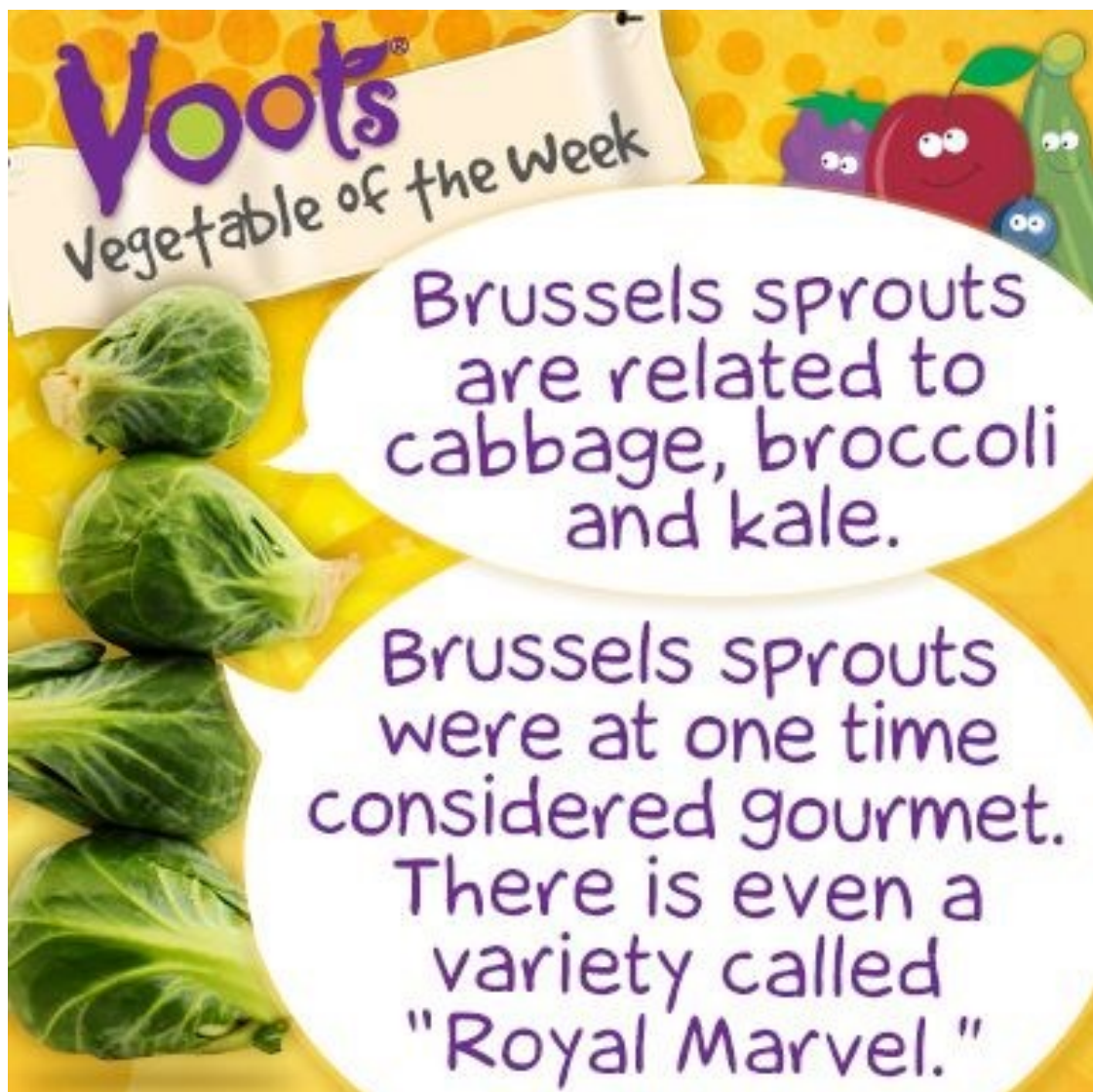
Eat a variety of whole grains (like whole-wheat bread, whole-grain pasta, and brown rice). Limit refined grains (like white rice and white bread).

Choose fish, poultry, beans, and nuts; limit red meat and cheese; avoid bacon, cold cuts, and other processed meats.

## Next week's menu - Week 1

WEEK 1	MONDAY <small>MEAT FREE</small>	TUESDAY	WEDNESDAY	THURSDAY	FRIDAY
MAIN DISH	Quorn Sausage Pasta Bake Served with Garlic Bread	Chef's Homemade Beef Lasagne Served with Garlic Bread	Halal Chicken Tikka Masala With accompaniments	Chef's Fish of the day	Tandoori Chicken Pizza or Pepperoni Pizza (Both Halal)
VEGETARIAN MAIN DISH	Quorn Nuggets	Southern Fried Quorn Burger Served in a Soft Bun	Vegetarian Cottage Pie		Cheese & Tomato Pizza
ACCOMPANIMENTS <small>5 x 10p</small>	New Potatoes Baked beans Carrots Assorted Mixed Salad Coleslaw	New Potatoes Seasonal Vegetables Garlic Bread Assorted Mixed Salad Coleslaw	Rice & Raita Naan Bread or Chapati Assorted Mixed Salad	Chips Baked beans Assorted Mixed Salad Coleslaw	Potato Wedges Seasonal vegetables Baked Beans Tomato sauce
SNACK MENU	Jacket Potato with Cheese/Tuna or Beans Cheese Panini Assorted Sandwiches/Wraps	Jacket Potato with Cheese/Tuna or Beans Cheese Panini Assorted Sandwiches/Wraps	Jacket Potato with Cheese/Tuna or Beans Cheese Panini Assorted Sandwiches/Wraps	Jacket Potato with Cheese/Tuna or Beans Cheese Panini Sandwiches/Wraps	Jacket Potato with Cheese/Tuna or Beans Cheese Panini
MAIN DESSERT	Iced Finger Bun	Treacle Sponge Served with Custard	Bun	Fresh Fruit Salad served with Ice Cream <small>5 x 10p</small>	Chef's Cookie of the Day
COLD DESSERT	Cheese, Biscuits & Grapes Selection of Yoghurts Selection of Fresh Fruit, Watermelon and Grapes	Fruit Cheesecake Selection of Yoghurts Selection of Fresh Fruit, Watermelon and Grapes	Jelly Selection of Yoghurts Selection of Fresh Fruit, Watermelon and Grapes	Chef's Cookie of the Day Selection of Yoghurts Selection of Fresh Fruits, Watermelon & Grapes	Selection of Yoghurts Selection of Fresh Fruit, Watermelon and Grapes

Did you know?



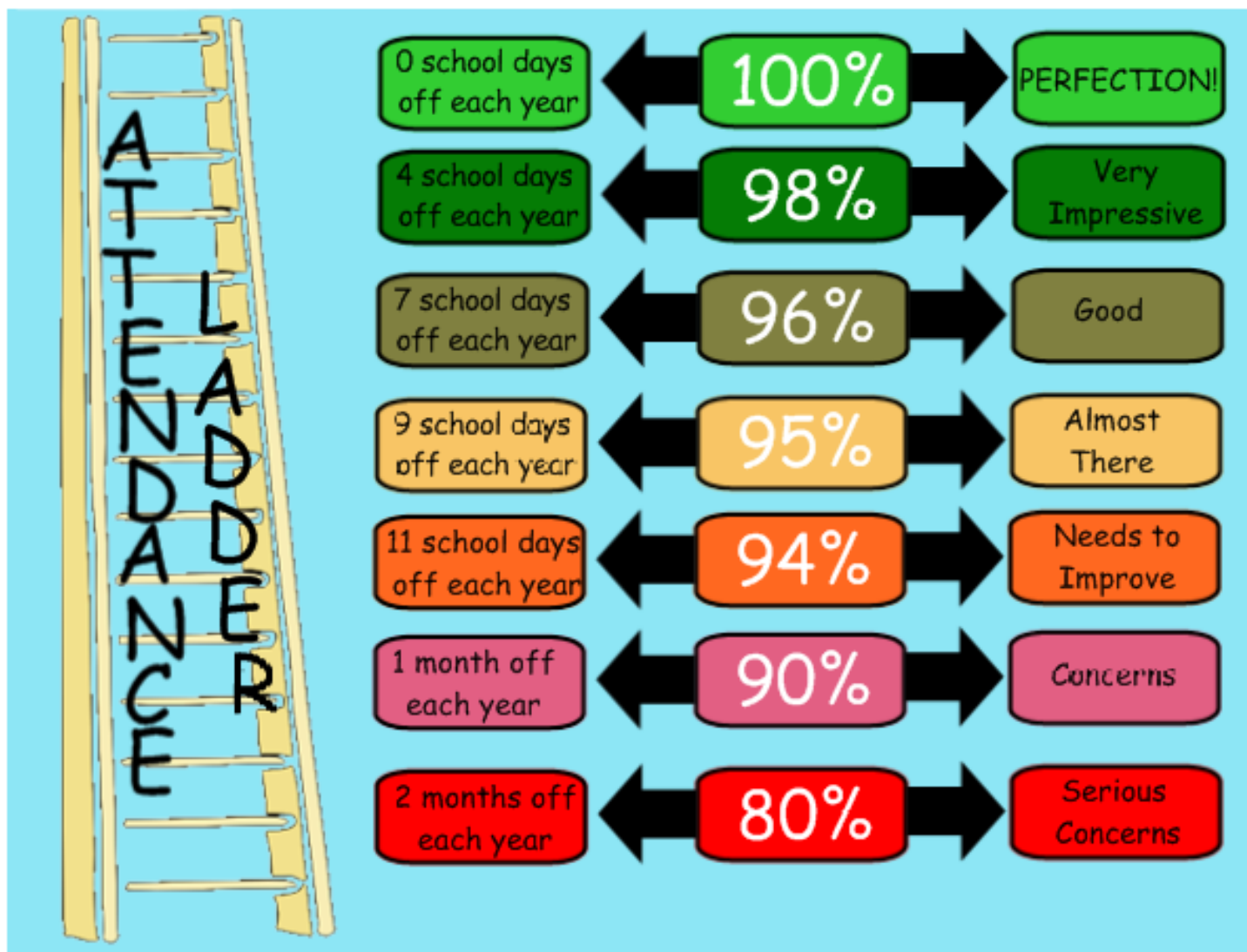
Nursery AM	93.47%
Nursery PM	90.34%
Rec HCA	91.07%
Rec Mem Fox	92.78%
1 Darwin	92.33%
1 Goodhall	91.29%
2 Galileo	99%
2 Mathai	95.67%

## This weeks attendance figures

Some great improvements this week—Lets keep it up for the last few weeks of the school year.

3/4 Dali	95.33%
3 Matisse	93%
3 Kahlo	95.86%
4 Hockney	97.67%
4 Warhol	95.33%

5 Ijliya	96.82%
5 Nobel	86.96%
5 Shaw	98.33%
6 Anderson	92.33%
6 Singh Bhatti	94.52%



## Trips - Summer Term 2

Below is a list of the following trips that will be taking place throughout  
Summer Term 2:

Date	Location	Year	Cost
Tuesday 6 <sup>th</sup> June Thursday 8 <sup>th</sup> June	Nell Bank	Reception	£10.00
Wednesday 7 <sup>th</sup> June	None-go-bye Farm	Nursery	£4.00
Wednesday 14 <sup>th</sup> June to Friday 16 <sup>th</sup> June	Ingleborough Hall – Residential	Years 3 & 4	£80.00
Friday 16 <sup>th</sup> June	Bradford University – Literacy Festival	Year 6	FREE
Monday 19 <sup>th</sup> June	Bradford University – Literacy Festival	Year 4H	FREE
Wednesday 21 <sup>st</sup> June	Bradford University – Literacy Festival	Year 5	FREE
Thursday 22 <sup>nd</sup> June	St George's Hall – Bradford Literacy Festival	Year 6	FREE
Monday 26 <sup>th</sup> June	Bradford University – Literacy Festival	Year 4W	FREE
Tuesday 27 <sup>th</sup> June	Bradford University – Literacy Festival	Year 3	FREE
Tuesday 27 <sup>th</sup> June Tuesday 11 <sup>th</sup> July	Pudsey Train Station	Reception	FREE
Wednesday 28 <sup>th</sup> June	Cannon Hall Farm	Year 3	£7.50
Tuesday 4 <sup>th</sup> July Tuesday 18 <sup>th</sup> July	Keasden Head Farm	Year 5	£5.00
Wednesday 5 <sup>th</sup> July	Cannon Hall Farm	Year 3	£7.50
Thursday 6 <sup>th</sup> July Thursday 13 <sup>th</sup> July	Sundown Adventureland	Year 1	£10.00
Monday 10 <sup>th</sup> July	Filey	Year 2	£8.00
Tuesday 11 <sup>th</sup> July	Filey	Year 4	£8.00
Monday 17 <sup>th</sup> July	Go Ape	Year 6	£10.00
Wednesday 19 <sup>th</sup> July	Cannon Hall Farm	Years 3 & 4	£7.50

***Please remember to pay off any outstanding balance to ensure all trips go ahead. Thank you for your support.***

## Leadership thought of the week:



Word of the week: **character**

## Dates for your diary:

- ♦ Mon 26<sup>th</sup> - Literature Festival Y3/4D
- ♦ Tues 27<sup>th</sup> - Pudsey Train Station Rec and Literature Festival Y4W
- ♦ **Wed 28<sup>th</sup> - School closed for Eid**
- ♦ **Thurs 29<sup>th</sup> - School closed for Eid**
- ♦ Friday 30<sup>th</sup> - Eid Parties
- ♦ Tues 4<sup>th</sup> - Keasdon Farm Y5S/Y5I
- ♦ Wed 5<sup>th</sup> - Cannon Hall Y3
- ♦ Thurs 6<sup>th</sup> - Sundown Adventure Land Y1



We would like to wish everyone celebrating a very happy Eid Mubarak from everyone at Thornbury. Please note, **school re-opens for ALL on Friday 30th June.**

### Eid parties

We will be having a party to celebrate Eid on Friday. All pupils can come to school in their best clothes. If you are sending food in, please ensure it is *shop bought and sealed with all ingredients clearly outlined.*

### Thornbury's got talent

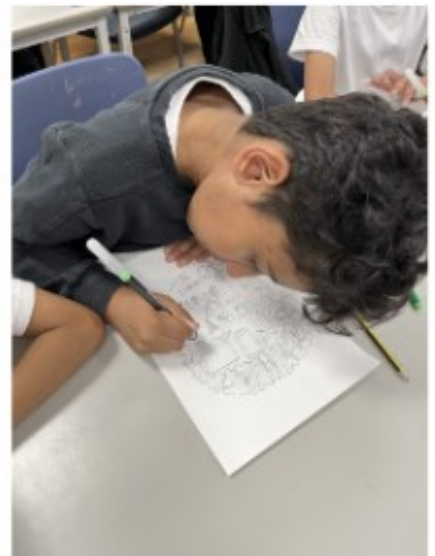
Pupils requested to bring their favourite event back and we delivered! The auditions for our show will be taking place on Friday 30th. *Remember you need to be in it to not miss it!*



Year 2 have started their access all arts week work on abstract portraits of themselves.



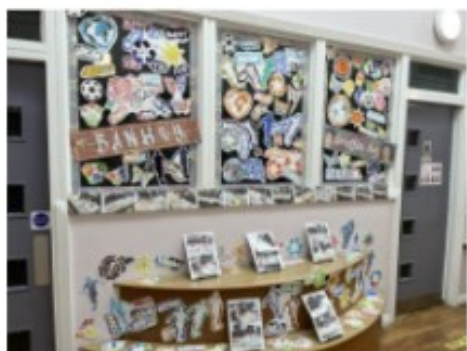
Year 3 and 4 have started the mark making part of Arts week by looking at what identity means and what makes us all different.



Year 1 have been working hard on their salt dough portraits and used natural materials to show the features of their faces.



Year 5 completed their graffiti art unit earlier in June and this shows all their completed work. We are so proud of you. Some really tricky artist skills were mastered, as well as learning a lot about street art techniques and artists such



Reception children enjoyed using the mirrors to look carefully at their faces and drawing their own portraits.



Year 3 and 4 really enjoyed their stencilling work and produced some really creative seascapes using a range of ocean creatures all under threat from plastic pollution.





## SCHOOL TERM AND HOLIDAY DATES

# 2023 - 2024

(All dates are inclusive)

### AUTUMN TERM 2023

Staff Inset Day - 1	Monday 4 <sup>th</sup> September 2023
Re-open (for students) on	Tuesday 5 <sup>th</sup> September 2023
Mid Term Closure	Monday 23 <sup>rd</sup> October - Friday 27 <sup>th</sup> October 2023
Closure after school on	Friday 15 <sup>th</sup> December 2023
Christmas Holiday	Monday 18 <sup>th</sup> December – Monday 1 <sup>st</sup> January 2024
Number of openings	34 + 35 = 69

### SPRING TERM 2024

Staff Inset Day - 2	Tuesday 2 <sup>nd</sup> January 2024
Re-open on (for students) on	Wednesday 3 <sup>rd</sup> January 2024
Mid Term Closure	Monday 12 <sup>th</sup> February - Friday 16 <sup>th</sup> February 2024
Closure after school on	Thursday 28 <sup>th</sup> March 2024
Easter Holiday	Friday 29 <sup>th</sup> March – Friday 12 <sup>th</sup> April 2024
('Eid ul Fitr 1445*)	(Wednesday 10 <sup>th</sup> April 2024)
Number of openings	28 + 29 = 57

### SUMMER TERM 2023

Re-open on	Monday 15 <sup>th</sup> April 2024
May Day Closure	Monday 6 <sup>th</sup> May 2024
Mid Term Closure	Monday 27 <sup>th</sup> May - Friday 31 <sup>st</sup> May 2024
'Eid ul Adha 1445* holiday	Monday 17 <sup>th</sup> and Tuesday 18 <sup>th</sup> June 2024
Closure after school on	Tuesday 23 <sup>rd</sup> July 2024
Number of openings	29 + 35 = 64
<b>TOTAL NUMBER OF OPENINGS</b>	<b>190</b>

Staff Insets : two full days and six twilight sessions

\* Please note – 'Eid holidays may be revised slightly depending upon sighting of the new moon